

ALLEN WILLITS ESTATE & CARITA WILLITS SALE

SATURDAY, APRIL 5, 2025

11:00 A.M. CST Start Time | Storm Date: April 12th



AUCTION LOCATION: 250 128th Rd, Clarks, NE 68628

Directions: From Hwy 92, go 2 miles south on County Road C (Polk Hwy), turn west on County Road 128 for half mile

Online portion of sale powered by EquipmentFacts



Sale order starting with miscellaneous rack items followed by equipment. At approximately 1:00 p.m. CST, the online offering will begin.

Lunch stands and restrooms will be provided.

TRACTORS & COMBINES



JD 4850

9,231 hrs ps, full set weights, sells w/ duals, 3 hyd, Power beyond, quick hitch, 3 pt hyd arm, 480-80-42 rubber (good)



JD 4030

12,744 hrs, Quad, 18-4-34 rubber, 2 Hyd, Quick hitch



JD 4430

12,169 hrs, Quad, 3 Hyd, Quick hitch



JD 9500 Combine

7200 engine, 5800 separator hrs.

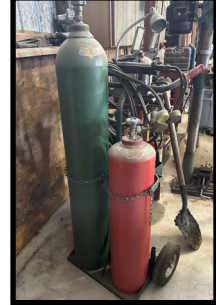


JD 6620 Combine

OTHER TRACTORS

- IH Farmall M Tractor/Loader
- IH Farmall M Tractor w/ Sweep—Narrow front, 13.6-38 rubber (good)

TOOLS & MISCELLANEOUS



- (2) Cub Cadet riding lawn mowers —1 for parts
- Acetylene torch
- 3 pt fork lift
- Large log splitter
- Anthony steel box wagon
- Grizzly drill press
- Craftsman grinder on stand—1/2 hp.
- Anvil—nice!
- Ingersoll Rand air compressor
- Century wire welder
- Dewalt chop saw
- U.S. General tool cart
- Old stick welder
- Masterforce tool chest—15 drawer
- Craftsman floor jack
- Sprayer tanks
- Pelican bass fishing boat
- Crescent wrenches
- Lots of misc. tools, files, hammers, wrenches
- Extension cords
- Shovels, rakes, and forks
- Small tool boxes
- Schumacher starter charger
- Dewalt 20 volt grease gun
- Air tank
- Garden hoses
- Floor jacks
- Misc. Imp tires and rims
- Fire Sense patio heater
- Magna Force air compressor
- Bolt bin

FARM EQUIPMENT



JD 7100 Planter
6 row 36", fertilizer & band sprayer in rear

- JD 644 Corn Head—6 row, 36"
- IH 345 Field Cultivator—22ft.
- 6 row Go-dig
- 19' 6" 480 Disk—9" spacing
- JD 1210A Grain Cart—parts
- Balzer 18' Shredder
- Hiller—6row 36"
- JD 885 Cultivator
- 3 pt. 400 gal. spray broom
- KMC 20' Tiller
- JD 1380 Swather
- Besler 6x36" Chopper
- Big Dog Killefer—10'
- Rhino 7' 248 Shredder—3pt
- J&M Grain Cart—center fold auger
- JD 2 pt. sickle mower #39
- Vassar 7' Disc—Track closer
- Orthman anhydrous machine—6 row 36"
- 500 gal fuel barrel—Diesel, electric pump
- Pull type sprayer—VLU 1000, sprayer specialties, 60ft, hydraulic, globes
- JD 918 Platform Header
- JD 915 Grain Platform Header
- JD 5 row 36" planter
- Set of Snyder saddle tanks—250 gal each
- 10' 3pt hydraulic blade
- 1000 gal. nurse trailer—w/ pump and cone
- Anhydrous machine

- JD 896A side delivery rake
- Peck 8" x 61' Auger
- 8" x 56' Peck Auger
- JD Starfire ITC GPS
- JD Starfire 3000 GPS
- (2) Pipe Trailers
- (1740) 6"-20" Gated aluminum pipe
- (900) 6"-20" Gated plastic pipe
- Misc. sprinkler pipe
- Misc. 6" irrigation fittings
- (2) Buffalo guide systems
- Guide system stand
- 16' Big Valley gate
- (8) Farmmaster panels
- Bow gate
- (2) Old IH Cultivator Go Dig
- Hydraulic spring tooth
- Bale fork

TRUCKS

- '73 Chevy Grain Truck—shows 18,838 mi.
- '73 International Farm Truck—82, 016 mi., 4x2 speed, 16' steel box

TRAILERS

- 6'5"x20' Flatbed Car Trailer—steel floor
- 5'x7' 2-wheel trailer

Many more photos available online at www.engel-sales.com

FOR MORE INFORMATION: Call Ken Rieken (308) 550-0214

TERMS: Cash. All property at buyer's risk as soon as sold. No property to be removed until settled for. Not responsible in case of accident. Any information day of sale takes precedence over written material.

DAY OF SALE PHONE (308) 550-0214

www.engel-sales.com

AUCTIONEERS

- Ken Rieken (308) 550-0214
- Terry Engel (308) 548-8437
- Trent Engel (402) 750-6582
- Chase Rieken (308) 550-1805

CLERKS

- Lu Rieken (308) 550-0423
- KC Rieken (308) 550-0113
- Paige Urban (402) 750-6582
- Email: engelsalesauction@gmail.com

Engel Sales